

Aladdin

MANTLE LAMPS



Provide Sight Saving
Modern
WHITE LIGHT
from kerosene

* Aladdin

Kerosene (Coal Oil) MANTLE LAMPS

Bring Modern White Light to Homes Anywhere

TABLE LAMPS



The Aladdin Kerosene Mantle Lamp has many features; it produces a modern white light of 60 candle power, and operates 50 hours on a single gallon of kerosene or at over four times the efficiency of the common flat wick lamp. In operation it is simplicity itself, it is quiet, odorless and noiseless and perfectly safe. And all is combined in a beautiful decorative lighting device of which you will be proud.

The importance of good light in the home cannot be too strongly stressed. Its presence creates an atmosphere of cheer, of brightness and happiness. Such a light is particularly essential in a home for reading, sewing, and studying especially where children have school work to do.

Good light is as important as good air or good food. In fact there is nothing that adds more to the healthfulness, happiness, comfort and convenience of a home than good light. Eye-sight is a priceless possession and every possible safeguard should be used to preserve and protect it. For many years the old-style yellow-flame oil light has been the only light available for homes without electricity, and the damage it has done to the eyes of millions cannot be figured even in billions. It's small wonder that the Aladdin Mantle Lamp with its abundance of modern white light, its amazing economy, its safety and simplicity has won its way into the hearts and homes of over seven million users throughout the world.



14" Whip-o-lite Shade No. 374 Shown
No. B-75
In Ivory Alacite Glass
Less 14" Shade and Tripod
\$6.50
As Shown
\$8.30



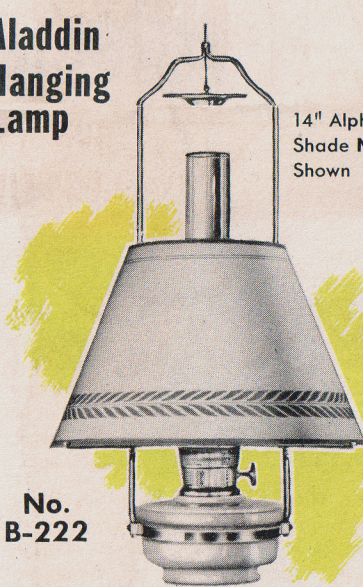
14" Whip-o-lite Shade No. 365 Shown
No. B-53
In Clear Crystal Glass
Less 14" Shade and Tripod
\$5.95
As Shown
\$7.75



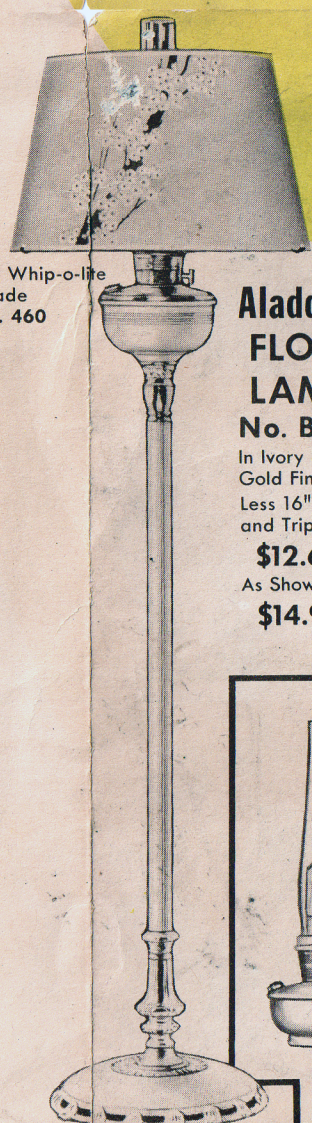
14" Whip-o-lite Shade No. 371 Shown
B-137 ALL BRASS BRONZE FINISH
Less 14" Shade and Tripod
\$8.25
As Shown
\$10.05



B-138 ALL BRASS NICKLED
(Same Prices as for B-137)



Aladdin Hanging Lamp
14" Alpha Reflector Shade No. 329 Shown
No. B-222
In Ivory Alacite and Metal
Without 14" Shade \$7.50
With Any 14" Shade 9.00
(No Tripod necessary)



16" Whip-o-lite Shade No. 460
Aladdin FLOOR LAMP
No. B-426
In Ivory and Gold Finish
Less 16" Shade and Tripod
\$12.65
As Shown
\$14.95



14" Whip-o-lite Shade No. 370 Shown
Aladdin Table Lamp
No. B-25
Less 14" Shade and Tripod
\$10.95
As Shown
\$12.75



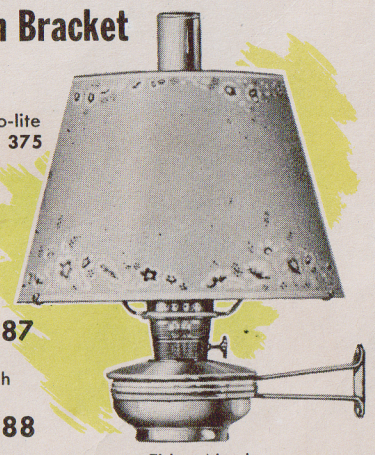
16" Whip-o-lite Shade No. 460
Aladdin FLOOR LAMP
No. B-425
In Ox. Bronze Finish
Less 16" Shade and Tripod
\$12.65
As Shown
\$14.95



Aladdin Hanging Lamps
14" Whip-o-lite Shade No. 371 Shown
B-210 All Metal Nickel Finish
B-216 All Metal Ox. Bronze Finish
Either Number, without 14" Shade \$8.80
With 14" Shade 10.30



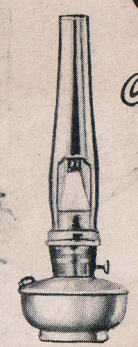
14" Whip-o-lite Shade No. 372 Shown
Aladdin Bracket Lamp
No. B-179
In Ivory Alacite and Metal:
Without Shade or Tripod \$6.50
With Any 14" Shade 8.30



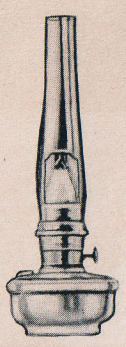
Aladdin Bracket Lamp
14" Whip-o-lite Shade No. 375 Shown
No. B-187 All Metal Nickel Finish
or
No. B-188 All Metal Ox. Bronze Finish
Either Number:
Without 14" Shade or Tripod \$7.80
With 14" Shade and Tripod 9.60

Aladdin Fount Lamps

NU-TYPE MODEL B



- No. 153—Alacite Fount Lamp, Satin Brass Burner and Trim Each \$5.75
(Lighting Unit for B-179 Bracket Lamp)
- No. 154—Alacite Fount Lamp, Nickel Burner and Trim Each 5.75
(Lighting Unit for B-222 Hanging Lamp)
- No. 160—All Brass Nickel Plated Fount Lamp, Nickel Burner Each 7.05
(Lighting Unit for B-210 Hanging Lamp; Bracket Lamp B-187)
- No. 161—All Brass, Satin Brass Fount Lamp, Satin Brass Burner ... Each 7.05
(Lighting Unit for B-425 Floor Lamp)
- No. 163—All-Brass, Ox. Bronze Fount Lamp; Ox. Bronze Burner ... Each 7.05
(Lighting Unit for B-216 Hanging Lamp and B-426 Floor Lamp)



All Metal Fount Lamp B-160, B-161 or B-163
Price quoted includes Fount and Burner complete, and 1 Lox-on Mantle and 1 Lox-on Chimney.
Alacite Fount Lamp B-153 or B-154

Aladdin KEROSENE
MANTLE LAMPS
BRING YOU BETTER
LIGHT FOR BETTER
LIVING

ALADDIN Mantle Lamps are foremost among the greatest and most practical inventions of the century. Their invention and perfection is an outstanding accomplishment in the field of artificial lighting. Their use goes a long, long way toward solving the lighting problem for rural homes, for they provide an abundance of soft mellow modern white light not excelled in whiteness or steadiness even by electricity.

Aladdin light makes evening reading, writing, sewing, or studying a pleasure. It is one thing that the entire family can enjoy. It costs so little too, to operate. It burns common kerosene (coal-oil) which is one of the cheapest, safest, and most readily procureable of fuels.

**All Aladdin Lamps
Have these 10 Features**

Burns 50 Hours on a Gallon of Kerosene . . .
Lights Instantly with a Match . . . Uses 94%
Air—only 6% Kerosene . . . Is Absolutely Safe
—Can't Explode . . . Requires No Pump or
Pumping . . . Simplicity Itself—a Child Can
Run It . . . 60 Candle Power of Modern White
Light . . . Noiseless—Still—Quiet . . . Sanitary
—No Smoke—No Odor . . . No Generating—No
Generator . . . Durable—Lasting—Dependable
. . . Beautiful and Decorative.

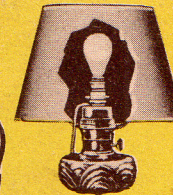
Aladdin Whip-o-lite

Is a shade material with all the illuminating qualities of fine glassware and the decorative qualities of parchment, and was researched and developed by Aladdin engineers. Whip-o-lite has high transparency and diffusion of light. It is permanent in color, withstands heat and resists warping, and is greaseless and oil-less.

Light filtered thru Whip-o-lite is restful, soft and mellow, with little loss of strength or efficiency. Whip-o-lite itself is decorative in texture, but when decorated by our experienced and skillful shade designers produces shades of long life and irresistible eye-appeal.

Cover upside down goes here

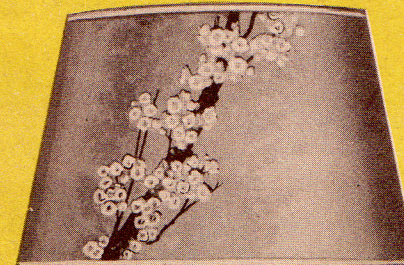
**Aladdin ELECTRIC
CONVERTER**



With this Aladdin Electric Converter it takes only a few seconds to change your Aladdin from kerosene operation to the use of electricity, and no longer to change back again to kerosene should occasion ever require. Consists of lamp attachment, standard light socket with built-in switch, and eight foot extension cord and outlet plug, assembled.

Price, Each, less bulb 90c

**Whip-o-lite SHADES
FOR FLOOR LAMPS**



No. 460—Variegated
16" Bottom • 12" Top • 10" High
Price, Each \$2.00 (16" Tripod
30c Extra.)

**REFLECTOR TYPE
ALPHA PAPER SHADE**
FOR TABLE OR HANGING LAMPS

Opaque—Used where it is desired to reflect light downward

•
14" Bottom
7" Top
9" High
•



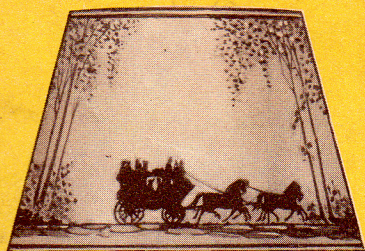
No. 329—Tan Price, Ea. \$1.50
14" Tripod, 30c Extra

Aladdin Whip-o-lite Shades

FOR
Aladdin
TABLE,
HANGING
AND
BRACKET
Lamps

•
SIZE:
14" Bottom
9" Top
9" High
•

PRICE
Any Design
\$1.50
14" Tripod 30c Extra



No. 144—Orange and Black



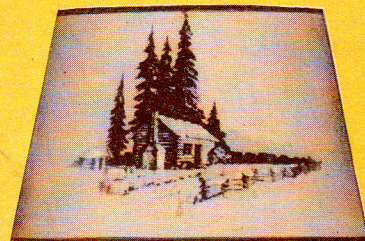
No. 365—Variegated



No. 368—Tan No. 369—White



No. 372—Tan No. 373—White



No. 209—Tan



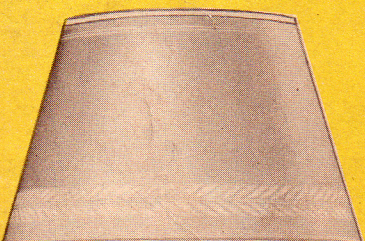
No. 366—Variegated



No. 370—Variegated



No. 374—Variegated



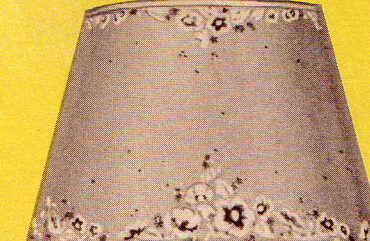
No. 364—White—Flockless



No. 367—Variegated



No. 371—Variegated



No. 375—Variegated

• For Full Service, Satisfaction and Economy Use Genuine Aladdin Parts and Supplies Only.

*TRADE MARK of The Mantle Lamp Company of AMERICA